



End-Of-Life Statement (EOL)

Effective Date: **December 31st 2010**

Parts Covered by this EOL Statement: **ALL AVS Single Piece Phenolic Pressure Furnace Power Port Systems**

AVS (Advanced Vacuum Systems, Inc.) is announcing the end-of-life for the single piece design, phenolic power port seals for all Sinter-HIP's & other Pressure Furnaces operating above 1 bar in pressure as of February 1st 2011.

No replacement parts will be made available for this single piece design. Customers are strongly cautioned to not repair or replace this design with any alternate vendor design / materials and to only replace the single piece design with an AVS Engineered 2 piece OEM replacement.

AVS is supplying a two piece, stainless steel & phenolic direct drop-in replacement design for all prior pressure furnace systems that originally utilized a single piece design. This same 2 piece system is OE on all new systems offered by AVS.

Systems Covered by this EOL statement:

AVS serial number between **1308 & 1727** are covered by this bulletin.

Questions and Answers:

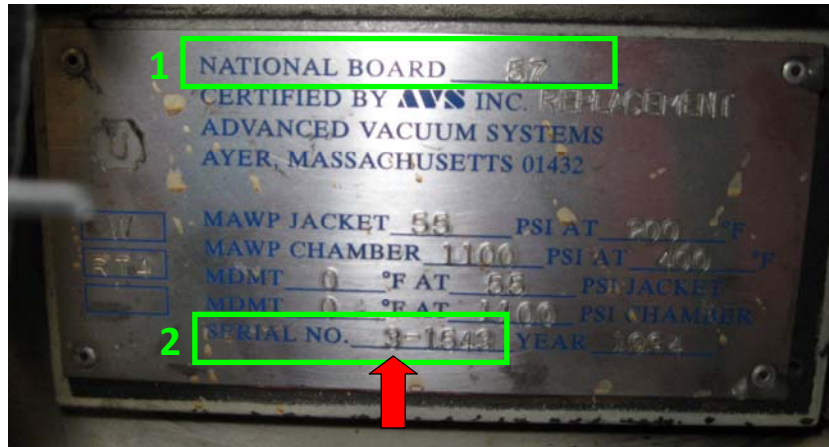
Question	Answer
Why is AVS making this End-Of-Life statement?	<p>AVS applies continuous improvements to all its system components for durability, ease of maintenance and safety.</p> <p>AVS has determined that the original design had the potential for unobserved abuse or events that shorten the usable life. Additionally, the new design affords increased redundancy & safety including added retention capabilities in the event of a phenolic failure.</p>

	An AVS notice was issued in 2007, stating that the original design warranted annual detailed user inspection, special inspection after certain defined events and cautioned against improper maintenance or non-OEM replacement.
How do I know if I am affected by this EOL statement?	<p>If your original AVS serial number falls between serial numbers 1308 & 1727, then your system is potentially affected. Only pressure systems are affected by this EOL statement. Your AVS serial number would be prefixed by a 3-nnnn or 4-nnnn to indicate a pressure vessel. Additionally, your vessel nameplate would have an ASME stamp and or National Board number affixed.</p> <p>You can find your AVS serial number on the name plate attached to either the main control cabinet or the vessel itself. Positions vary by system.</p> <p>If you question if your system is covered by this EOL, please contact AVS directly.</p>
Is the replacement offered under warranty?	No, the new design is not covered under the AVS warranty as all affected systems are out of the original buyers warranty period.
What is the cost of the replacement?	The costs of the replacement hardware is on a system by system basis. Please contact your AVS aftermarket sales representative for a formal quotation.
Do I need to change out to the new system right away?	AVS issued in 2007, a supplement to the Operations and Maintenance Manual including a detailed interim inspection plan for the covered items. If you perform this inspection and discover items / events that trigger a replacement, then that should be accomplished as soon as possible.
How can I identify if I have an affected port seal?	See the attached photographic aids at the end of this documents or you can photograph your current installation and email that to AVS for detailed evaluation.

Does AVS offer a field service option to review my system?	Yes, AVS has world-wide Field Service Support for all of its systems and every technician is capable of reviewing your current design and advising you of recommended service and parts.
Is there a defined migration path?	Yes, AVS has pre-engineered and designed a direct, field installable replacement that requires no changes or modifications to your pressure vessel system.

This section left intentionally BLANK

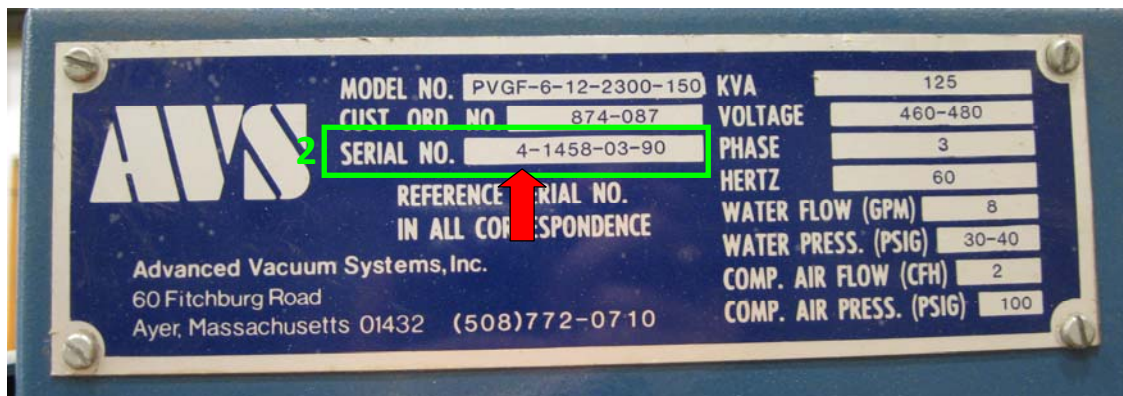
Vessel Mounted Name Plate



Potentially Affected System

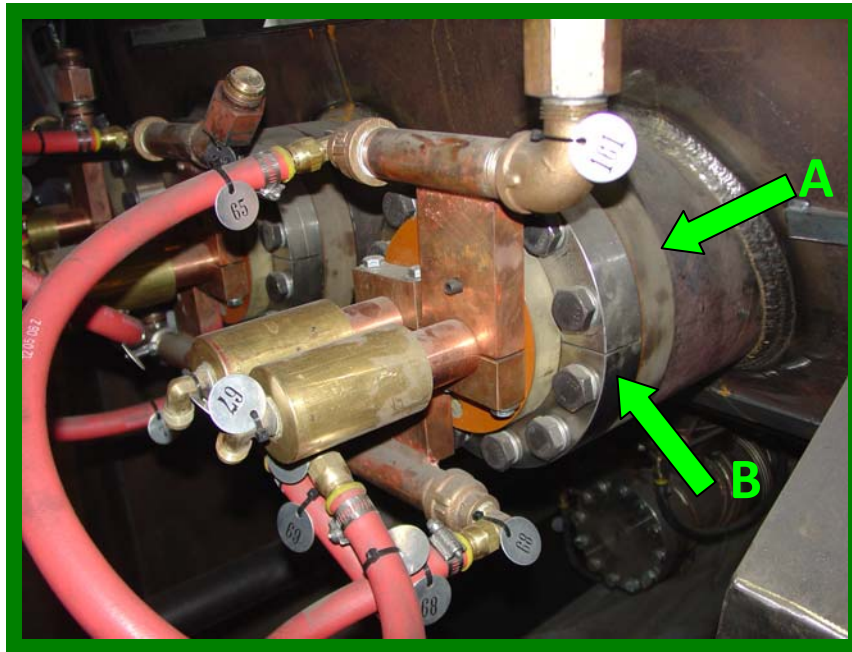
Green Box (1) National Board number
Green Box (2) Serial No.
Red Arrow – pointing towards '3' prefix

Control Cabinet Name Plate



Potentially Affected System

Green Box (2) Serial No.
Red Arrow – pointing towards '4' prefix



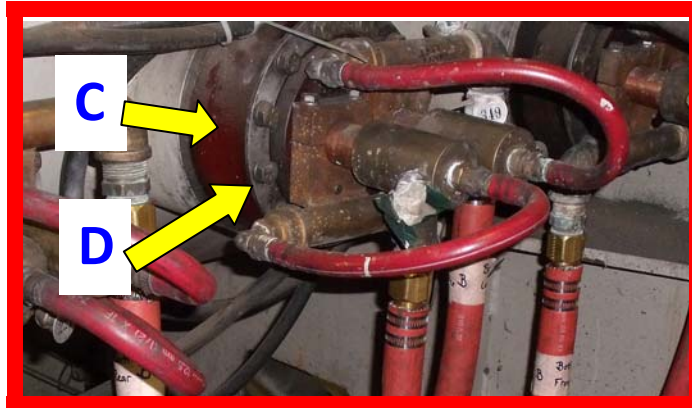
Item (A)
Approx 1.5"
of Phenolic

Item (B)
Approx 1.5"
of Stainless
Steel

New, 2 Piece Power Port Construction Example

Item (C)
Approx 3" of
Phenolic

Item (D)
Approx ¼" of
Aluminum or
Stainless
Steel



EOL – 1 Piece Phenolic Power Port Construction Example

This is the design covered by the EOL Statement

+++ End